

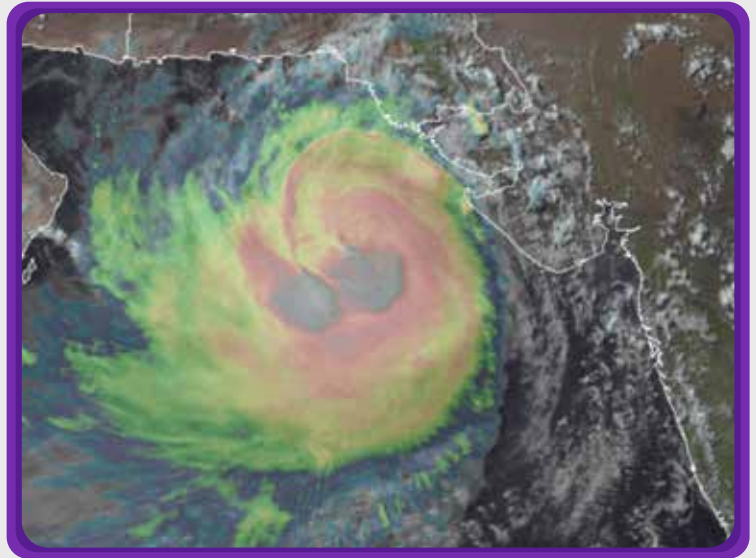


Fast Rural Development Program

Cyclone Biporjoy Situation Update-II

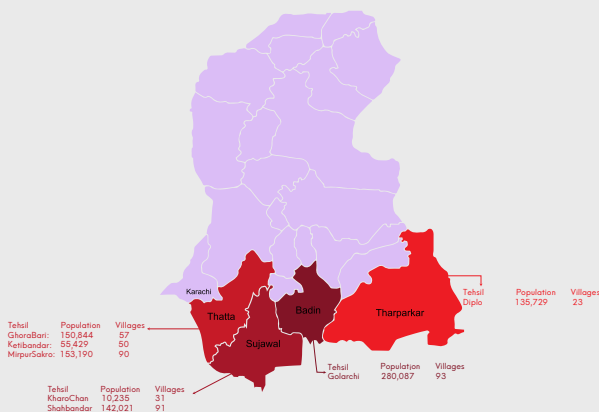
13 JUNE 2023

Since 2007, FRDP has consistently taken proactive measures in emergencies, promptly responding and ensuring the availability of authentic and real-time information on the ground. We assist all stakeholders in providing appropriate assistance to those in need. As soon as the cyclonic disturbance occurred, we activated our Emergency Response team. The assigned team visited high-risk areas, established contact with residents, and gathered accurate information. FRDP is also reaching out to partners and mobilizing resources for an immediate response.



CYCLONE BIPORJOY

DIRECT IMPACTED AREAS:

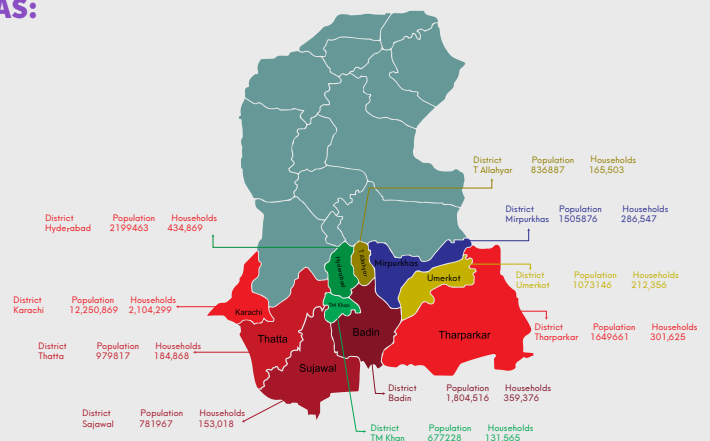


According to the latest forecast by the National Disaster Management Authority, tropical cyclone Biparjoy is predicted to continue moving northward until the morning of June 14, 2023. Afterward, it is expected to change course and move eastward. On the afternoon of June 15, 2023, it is projected to make landfall as a Very Severe Cyclonic Storm (VSCS) between Keti Bandar (Southeast Sindh Coastline) and the Indian Gujarat Coastline. The areas likely to be affected include Thatta, Badin, Sajawal, Tharparkar, Karachi, Mirpurkhas, Umerkot, Hyderabad, Ormara, Tando Allah Yar Khan, and Tando Mohammad Khan.

The projected landfall is expected to impact severely to following Tehsils within the districts of Thatta, Sajawal, Badin, and Tharparkar in Sindh.

However keeping in mind the extent and scale of the cyclone following are the districts that are potentially alert for heavy winds, rains, thunderstorms, and urban flooding.

INDIRECT IMPACTED AREAS:



DIRECT IMPACTED AREAS:


- ✓ FRDP is closely coordinating with district and provincial authorities to assist in ongoing evacuation and camp management efforts.
- ✓ Over 80,000 individuals are scheduled to be relocated.
- ✓ Thatta: Out of the 13,000 vulnerable population in Keti Bandar, 6,000 have been transferred to seven relief camps.
- ✓ Gora Bari has a vulnerable population of around 5,000, with 2,000 individuals evacuated and accommodated in three camps.
- ✓ Sujawal: Among the 36,560 vulnerable populations in Sujawal, 2,578 have been moved to 10 camps. Jati has 9,027 individuals at risk, of which 3,027 have been evacuated and settled in four camps.
- ✓ Similarly, out of the 7,936 vulnerable populations in Kharochan, 3,000 have been relocated.
- ✓ Billboards in Karachi, Hyderabad, and other cities are being removed.
- ✓ FRDP Senior Management is visiting established relief camps and closely monitoring the situation.
- ✓ FRDP has mobilized internal resources to address the immediate needs of around 500 families.

IMMEDIATE NEEDS:


- ✓ Transportation facilities are required to move approximately 8,000 households.
- ✓ Food and water provisions are needed for over 35,000 people in relief camps.
- ✓ Mosquito nets and repellents are required for over 9,000 households.
- ✓ Essential Medical Items to establish Medical services at relief camps



 www.frdp.org.pk

 +92 22 2651015

 info@frdp.org.pk

 House No. B-108 HDA Extension North,
Behind City School Qasimabad, Hyderabad,
Sindh Pakistan